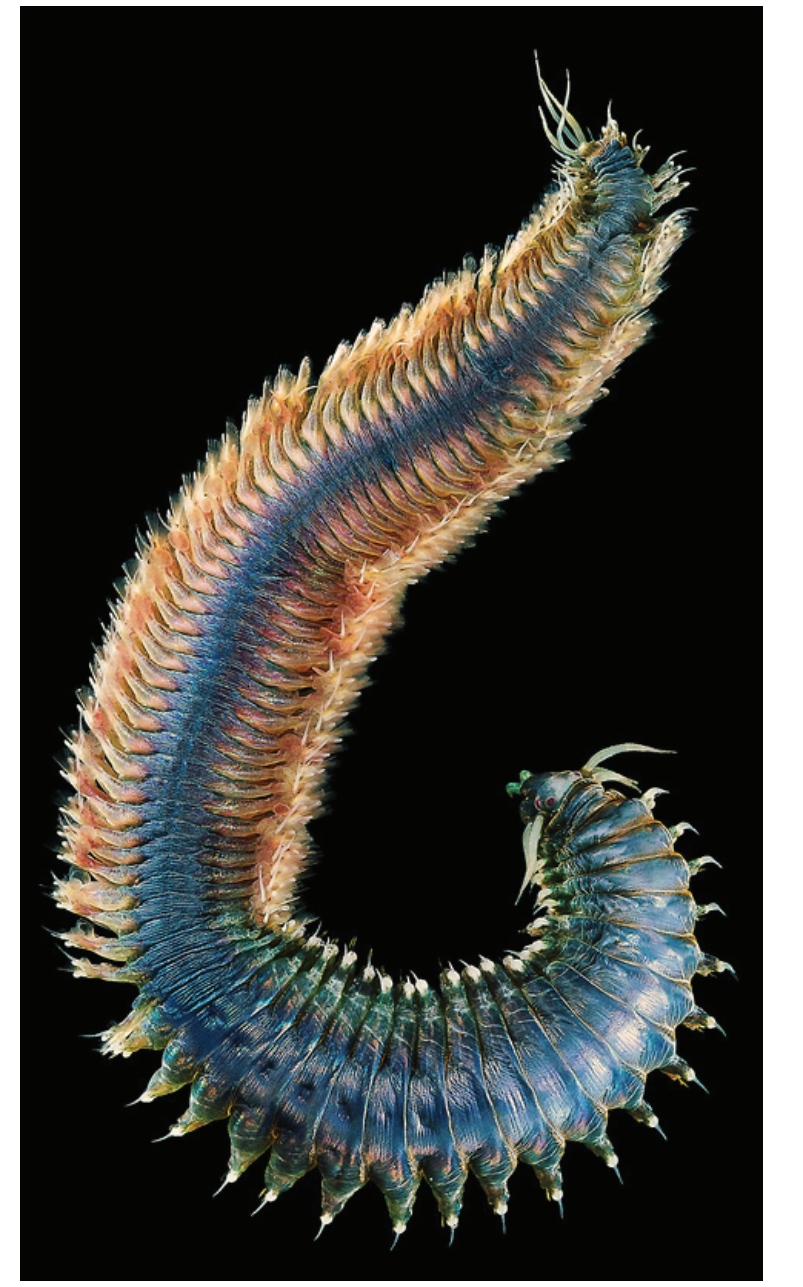


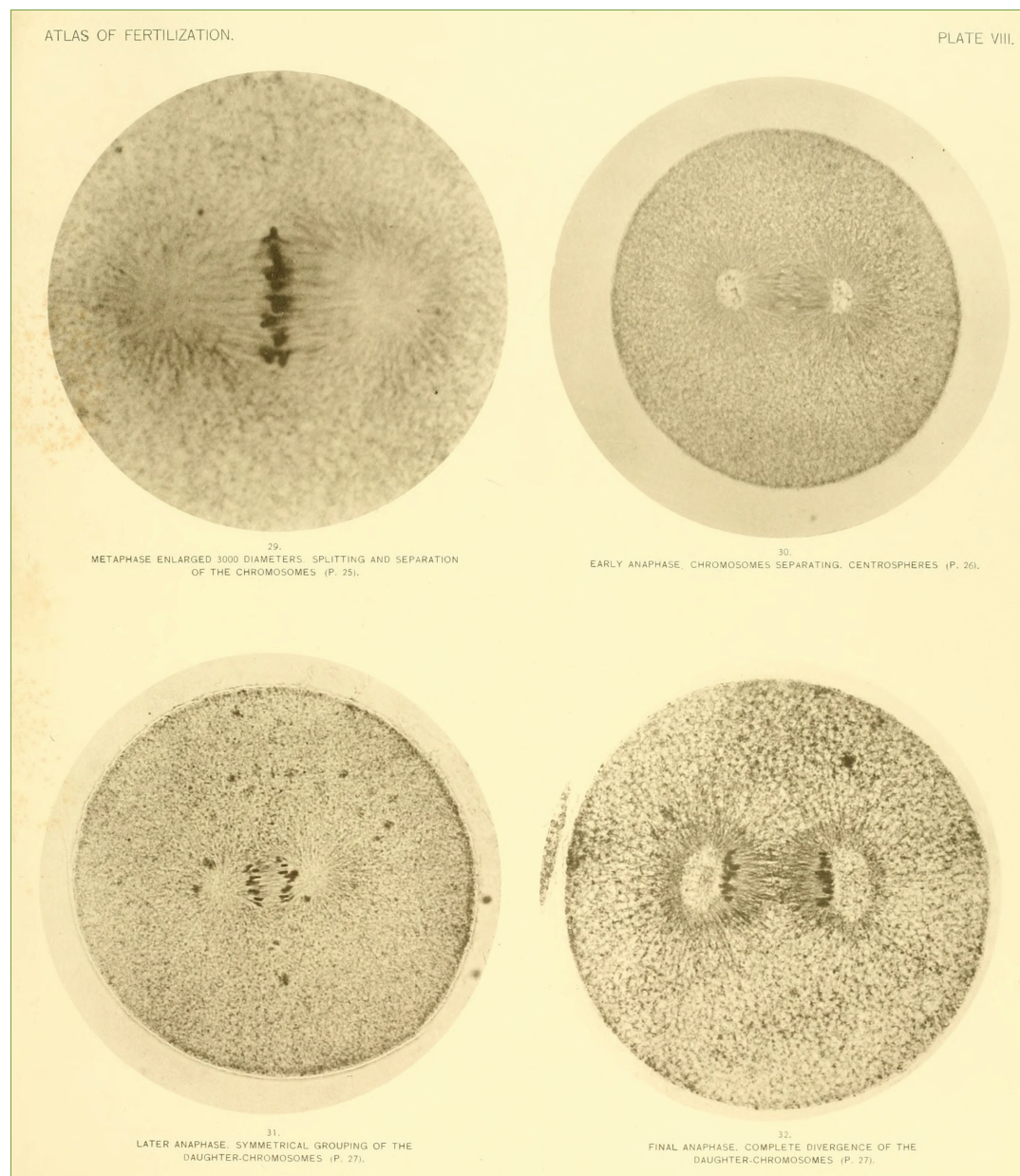
# Edmund Beecher Wilson

Like Morgan, Wilson first visited the Woods Hole US Fish Commission as a graduate student at the Johns Hopkins University. Wilson quickly realized the beauty of Whitman's suggestion that different researchers ask the same questions about different organisms. He carried out cell lineage studies at first in the polychaete worm *Nereis*.

Nereis

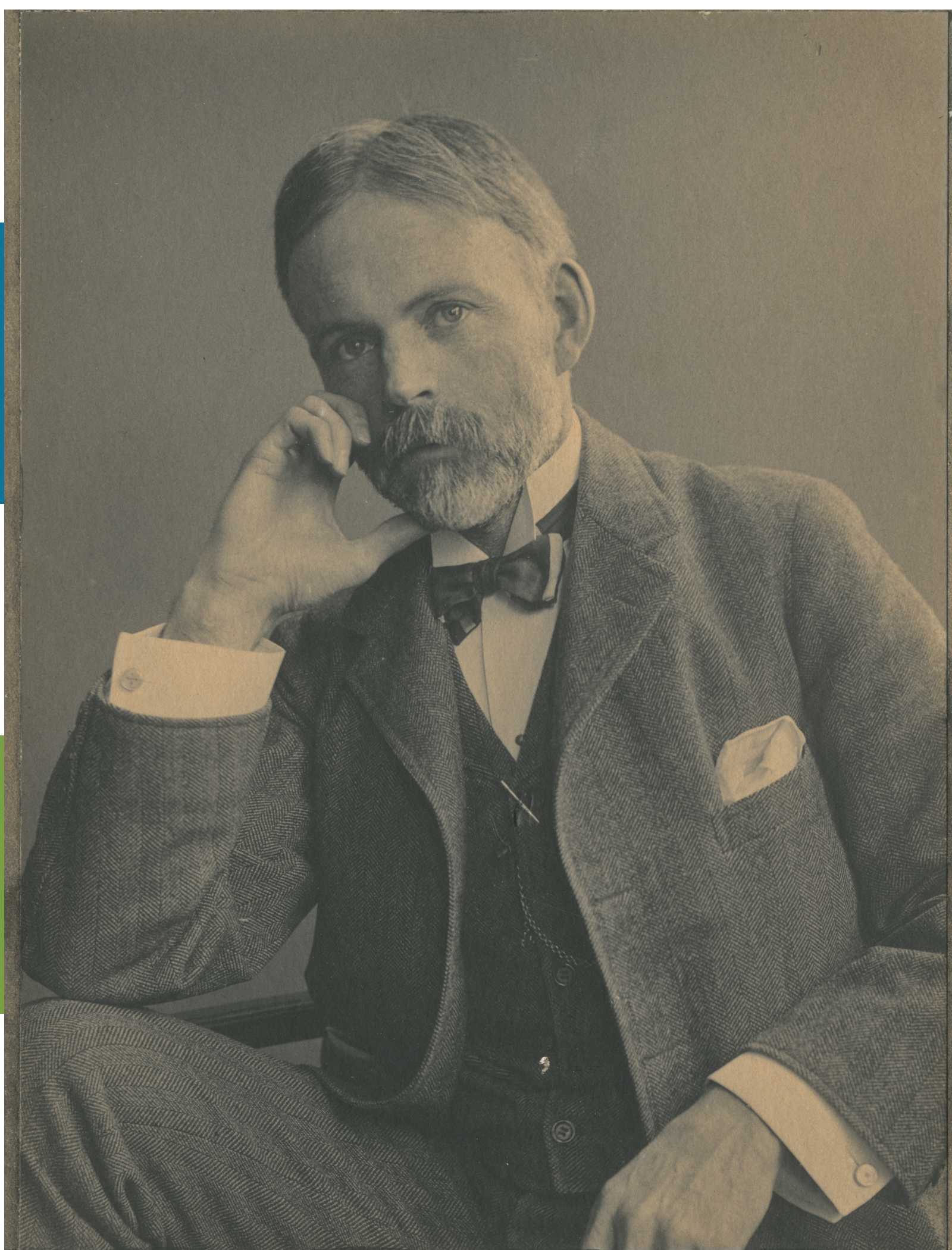
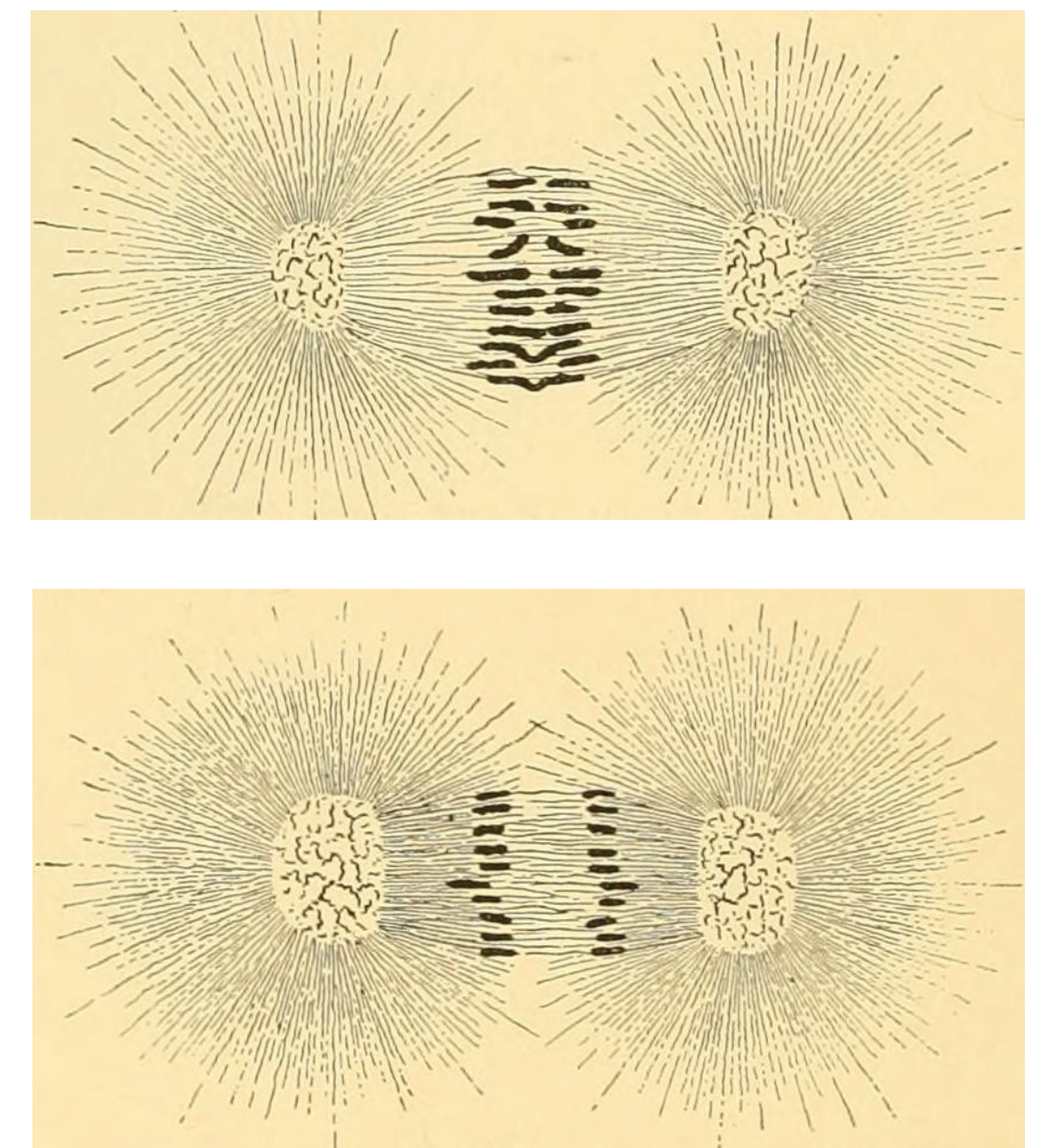


1895

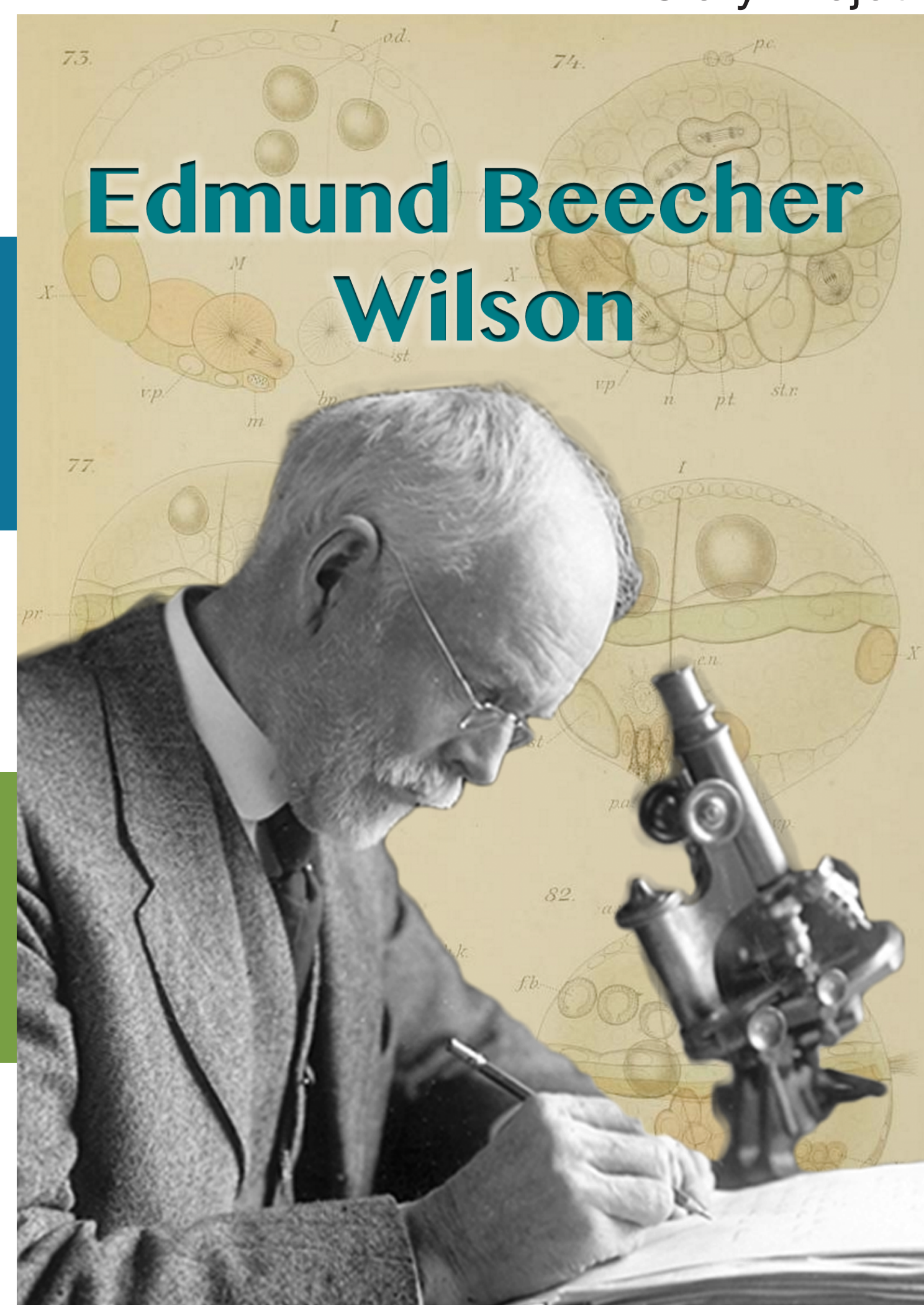


In meticulous and detailed studies, he worked with a photographer to record the process of fertilization and cell division in a volume published in 1895. His outstanding *Cell in Development and Inheritance* appeared in 1896 and became a classic for MBL researchers and other biologists.

1895



MBL History Project



A long-time Trustee who returned to the MBL most summers for the rest of his life, Wilson was a great supporter of the MBL. He encouraged study of marine invertebrates in order to understand fundamental biological processes. And he emphasized the value of using the best methods for preparing, presenting, and picturing cells as the basic units of life.